

## PARENT INFORMATION NOTE

**GRACE LUTHERAN SCHOOL**  
**VOL. 25**

**2825 Alameda de las Pulgas, San Mateo, CA 94403**  
www.gracelutheransanmateo.org  
**March 23, 2010**

**(650) 345-9082**  
**No. 29**

1. **CHAPEL OFFERINGS** for third quarter will be used to assist Elizabeth Froh who is studying to become a deaconess. She is attending Concordia Theological Seminary, Ft. Wayne, IN. To date, \$126.95 has been received.
2. **CHAPEL** this week will be tomorrow, March 24<sup>th</sup> at 10:00 a.m. During Holy Week (March 29-April 2) a service will be held each day at noon.
3. **GRACE SCHOOL CHOIR (3-8) AND PRIMARY CHOIR (K-2)** sing this Sunday, March 28<sup>th</sup> at the 9:00 a.m. Palm Sunday service. Warm-ups and robing will be held at 8:30 a.m. in the Parish Hall. Please see the attachment and return by Thursday, March 25<sup>th</sup>.
4. **GOOD FRIDAY:** School dismisses at 12:45 p.m. (following the Noon Day service) on Good Friday, April 2<sup>nd</sup>. Extended Care will be available until 6:00 p.m.
5. **EASTER BREAK** is April 5<sup>th</sup>-9<sup>th</sup>. No Extended Care during Easter break. Classes resume on Monday, April 12<sup>th</sup>.
6. **S.A.T. TESTING** for Grades 1-8 is taking place this week.. Please be sure that your child gets plenty of sleep.
7. **MANDATORY HOURS (Form C)** is due April 2<sup>nd</sup>. Be sure to turn in your Mandatory Hours form at the office. If you have any questions, please contact Lori Hahn. Please see the attachment.
8. **LIBRARY DAY** is Thursday, April 15<sup>th</sup>. Please return books on or before library day.
9. **YEARBOOK ADVERTISERS** are needed to help defray the cost of production. If you have a business or know someone who does, an ad may be placed in the yearbook for a cost of \$20.00. Please send checks payable to "Grace Lutheran P.T.L." along with a business card or message.
10. **YEARBOOKS:** Don't forget your school memories! Now is the time to order your 2009-2010 yearbook. The price will be \$30.00 per copy. Please make checks payable to "Grace Lutheran P.T.L."
11. **RE-ENROLLMENT PACKETS** have been sent out. Please return the re-enrollment application and registration fee of \$325 by March 31, 2010, in order to reserve a place for your child. Beginning April 1<sup>st</sup> the registration fee will be \$375, so plan to enroll early. If you have any questions, please contact the school office.
12. **INFORMATION AND BROCHURES** on summer schools, camps, athletics, and activities are available in the office.

### SCHEDULE OF SERVICES + LENT + HOLY WEEK + EASTER

Mid-Week Lent	Wednesday, March 24 & 31	Morning Prayer: 10:00 a.m.	Evening Prayer: 7:00 p.m.
Palm Sunday	Sunday, March 28	Divine Service: 9:00 a.m.	
Holy Week	March 29-31	Noon Day Service: 12:00 p.m.	
Maundy Thursday	Thursday, April 1	Noon Day Service: 12:00 p.m.	Divine Service: 7:00 p.m.
Good Friday	Friday, April 2	Noon Day Service: 12:00 p.m.	Tenebrae: 7:00 p.m.
Easter Vigil	Saturday, April 3	Vigil Service: 7:00 p.m.	
Easter Sunday	Sunday, April 4	Son-rise Matins: 7:00 a.m.	Divine Service: 10:00 a.m.

**Attachments:** School & Primary Choir Note

Summer Reading Skills Program

**GRACE LUTHERAN SCHOOL  
2825 Alameda de las Pulgas  
San Mateo, CA 94403  
(650) 345-9082**

**GRACE SCHOOL CHOIR (Grades 3-8) AND PRIMARY CHOIR (Grades K-2)**  
sing this Sunday, March 28th at 9:00 a.m. at the Palm Sunday service. Warm-ups will be held in the Parish Hall at 8:30 a.m. The children will be wearing choir robes and will be processing with palm branches. Please return the form below by Thursday, March 25th to assist us in our planning.

-----  
**(Please return by Thursday, March 25th)**

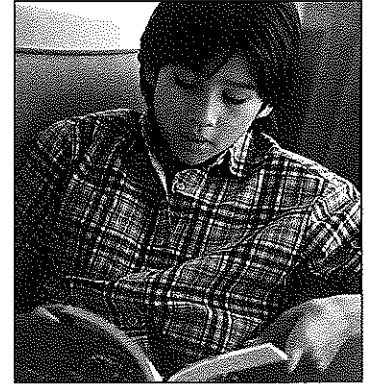
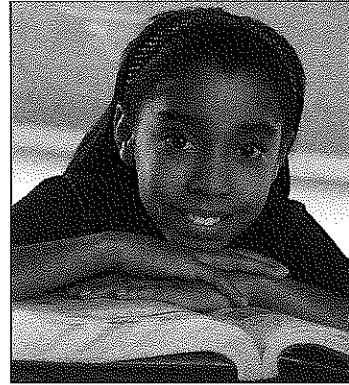
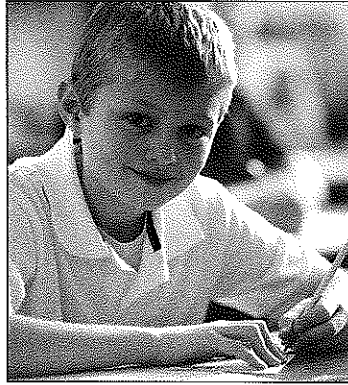
**My child** \_\_\_\_\_

\_\_\_\_\_ will be able to sing at the 9:00 a.m. service on  
Palm Sunday, March 28th (robing and warm-ups at  
8:30 a.m.)

\_\_\_\_\_ will not be able to participate.

\_\_\_\_\_  
**(parent's signature)**

# Summer Reading Skills Programs



## CLASSES OFFERED AT ST. ANDREWS LUTHERAN CHURCH

- Designed and taught by instructors from the Institute of Reading Development
- Offered through the San Mateo Parks and Recreation Department

### Program for 4-year-olds and entering kindergartners:

Children in this program learn beginning phonics and reading readiness skills, build comprehension, and develop a love of books and reading.

### Program for entering 1st graders:

Success in first grade requires a strong foundation of reading skills and a high level of confidence. In this program, your child will learn phonics, build sight vocabulary, improve comprehension, and experience success with independent reading.

### Program for entering 2nd graders:

In this program, students build strong reading skills, confidence, and a love of reading. Your child will make significant gains in phonics and word-attack skills, sight vocabulary, fluency, and comprehension.

### Program for entering 3rd graders:

In this program, students become more fluent, confident readers and learn to enjoy reading more. Your child will build strong comprehension, and will develop the long-word decoding and fluency skills required to read longer books with ease.

### Program for entering 4th and 5th graders:

Students in this program gain more than one grade level in comprehension, and increase fluency and speed. Your child will complete homework more quickly and easily, get better grades, and become fully absorbed in books.

### Program for entering 6th-8th graders:

Students in this program improve comprehension one to two grade levels while doubling reading speed. They also learn the best way to read textbooks, take notes, and study for tests. As a result, students complete homework more quickly and easily, get better grades, and enjoy reading more.

### Program for entering 9th-11th graders:

Students double reading speed, improve comprehension by one to two grade levels, and learn study skills. Excellent preparation for the SAT, ACT, and college.

---

Phonics

---

---

Comprehension

---

---

Vocabulary

---

---

Study Skills

---

---

Speed Reading

---

---

Love of Reading

---

FOR MORE INFORMATION OR TO REGISTER

1-800-470-3728 or

[www.cityofsanmateo.readingprograms.org](http://www.cityofsanmateo.readingprograms.org)

Please see reverse side for class schedule.

## Teachers

Classes are taught by instructors from the Institute of Reading Development. The Institute of Reading Development has worked in cooperation with the San Mateo Parks and Recreation Department for the last 31 years. Programs are offered as a community service through the San Mateo Parks and Recreation Department. The tuition is only \$299, *less than half the cost of similar reading programs*. Please ask about our family discount.

## Exciting Results

“I would like to thank you for such a positive outcome with my son James. He learned skills that have translated into wonderful grades, and more importantly, have given him more confidence in his reading abilities. He has actually asked to go to the library to pick out a book!”

- Parent of 4th grader

## Class Schedule

All programs meet once each week.

**Program R** – For 4-year-olds and entering kindergartners  
(must be age 4 when class begins)

**Program 1** – For entering 1st graders

**Program 2** – For entering 2nd graders

**Program 3** – For entering 3rd graders

**Program 4** – For entering 4th and 5th graders

**Program 5** – For entering 6th-8th graders

**Program 6** – For entering 9th-11th graders

**Program 7** – For adults, college students,  
and entering 12th graders

More reading classes are scheduled at nearby locations.

**SAN MATEO:** The following programs meet at St. Andrews Lutheran Church, 1501 South El Camino Real.

**Program R** - Tue., June 15-July 13, 2:00pm-3:15pm

**Program 1** - Fri., June 18-July 16, 12:00pm-2:00pm

**Program 2** - Fri., June 18-July 16, 9:00am-11:00am

**Program 3** - Fri., June 18-July 16, 3:00pm-5:00pm

**Program 4** - Tue., June 15-July 13, 4:15pm-6:30pm

**Program 5** - Wed., June 16-July 14, 12:00pm-2:30pm

**Program 6** - Wed., June 16-July 14, 3:30pm-6:00pm

**Program 7** - Wed., June 16-July 14, 7:00pm-9:30pm

FOR MORE INFORMATION OR TO REGISTER  
CALL THE INSTITUTE OF READING DEVELOPMENT AT

**1-800-470-3728**

Mon.-Thurs. 7am-7pm, Fri. 7am-6pm and Sat. 7am-1pm

OR VISIT OUR WEBSITE AT

**[www.cityofsanmateo.readingprograms.org](http://www.cityofsanmateo.readingprograms.org)**

**Inquire early! Class size is limited.**